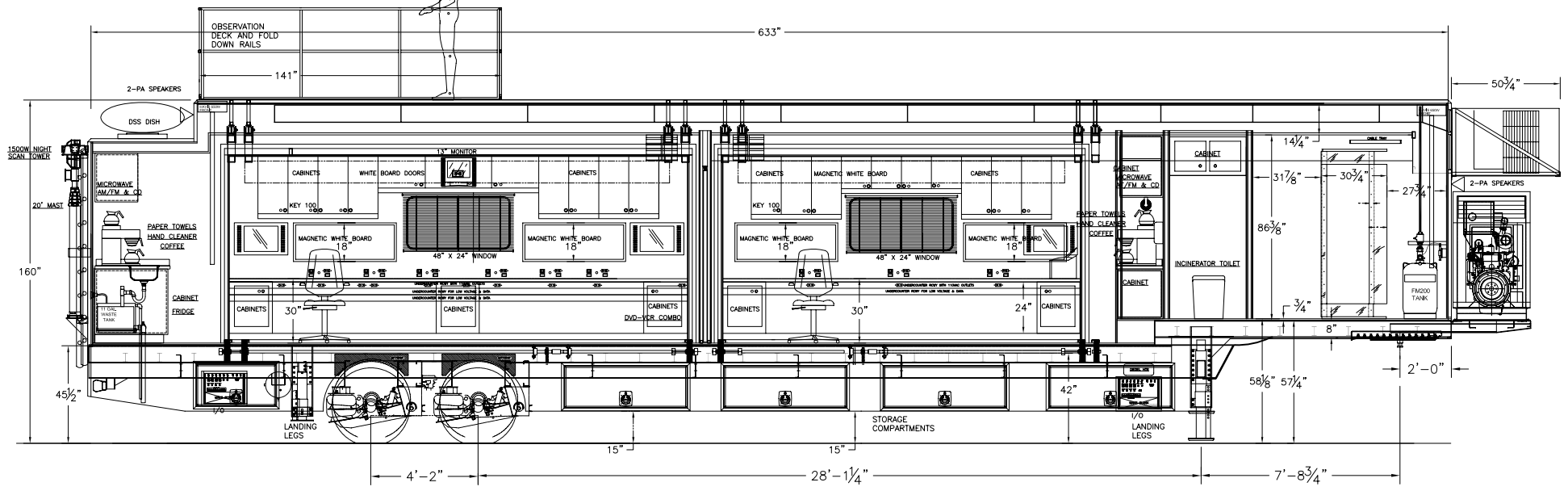
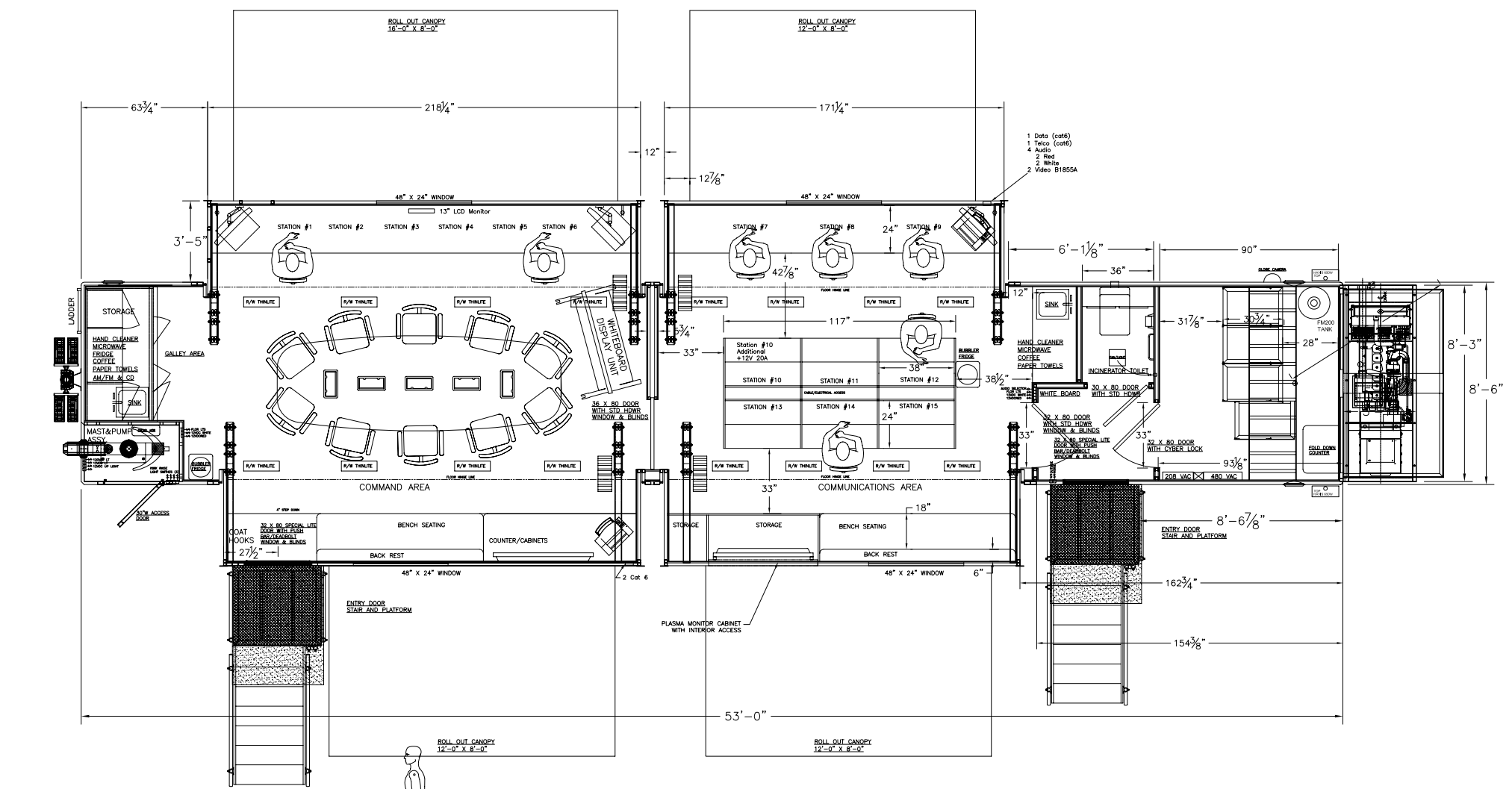


REVISIONS					DESCRIPTION
REV.	REV. DATE	CHK. BY	CHK. DATE	ENG.	
09	06-14-04	TS		CH	ADDED MAST CAMERA



INTERIOR ELEVATION

THIS DRAWING IS PROVIDED ON A CONFIDENTIAL BASIS SUBJECT TO RETURN ON DEMAND OF OSHKOSH SPECIALTY VEHICLES (OSHKOSH), WHICH RETAINS ANY AND ALL RIGHTS ASSOCIATED WITH IT AND THE ARTICLE OR ARTICLES IT REPRESENTS. DISCLOSURE, REPRODUCTION OR ALTERATION OF ANY PART OF THIS DRAWING, OR MANUFACTURE, USE OR SALE OF THE ARTICLE OR ARTICLES REPRESENTED, IS PROHIBITED WITHOUT THE PRIOR WRITTEN AUTHORIZATION OF OSHKOSH, OSHKOSH SPECIALTY VEHICLES (unpublished).

SHEET NUMBER: 1 OF 4	REFERENCE DRAWING/TITLE: INTERIOR LAYOUT DRAWING MASSACHUSETTS STATE POLICE 8' 6" x 53'	DATE: 01-10-04	SCALE: N/A
JOB# 24864	<b>OSHKOSH</b> <b>SPECIALTY</b> <b>VEHICLES</b>	6745 S. LATHROP AVENUE HARVEY, IL 60426 PHONE: (708) 596-5066 FAX: (708) 596-2480	CHECKED BY: DRAWING NUMBER: 10249-A01-09