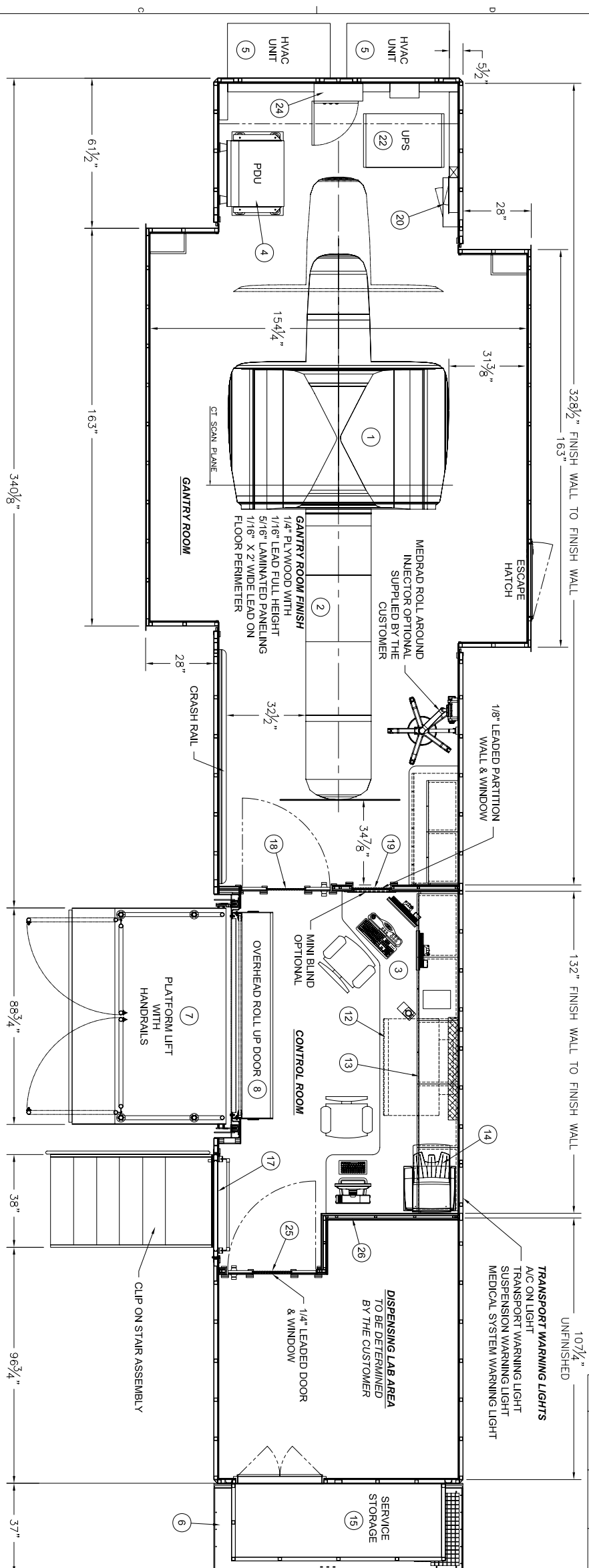
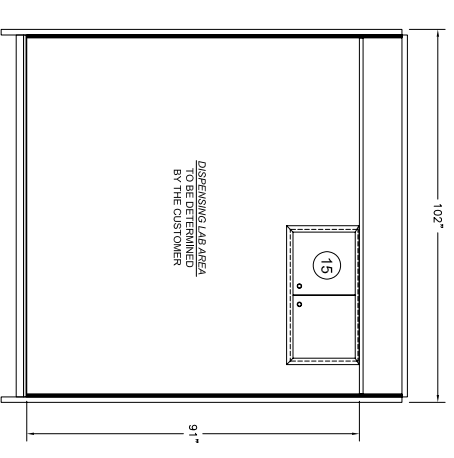


REVISIONS

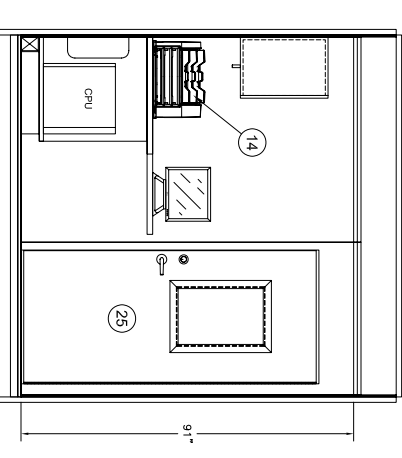
REV	REV. DATE	CHK. BY	CHK. DATE	ENG.	DESCRIPTION
01	11/13/06	WLL	11/13/06	D. BERTHOUD	UPDATED CEILING HEIGHT IN FRONT ROOM & PATIENT TO PLATFORM



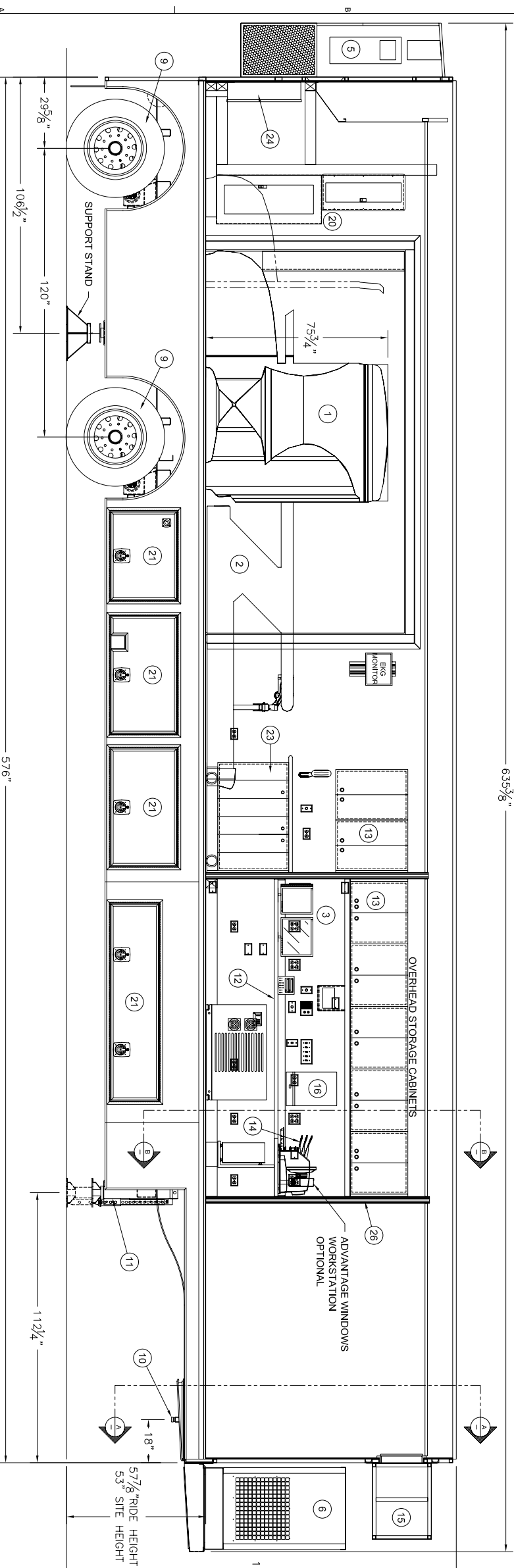
PLAN VIEW



SECTION "A-A"



SECTION "B-B"



ELEVATION VIEW

ITEM	QTY	PART NUMBER	DESCRIPTION
26	1		LEADED PARTITION WALL (1/4" THICK LEAD)
25	1		36" x 80" LEADED (1/4") DOOR w/ 16" x 24" x 14.5MM LEADED WINDOW (X2)
24	1		GE A1 PANEL
23	1		ROLL AROUND STORAGE CABINET w/ BI-FOLD DOORS
22	1		UPS - POWERWARE 9330 - 20 MODEL 15 (SUPPLIED BY GE)
21	9		LOWER COMPARTMENT DOORS (4-PS / 5-DS)
20	2		ELECTRICAL SERVICE PANELS (1-480V / 1-208V)
19	1		16" x 24" x 14.5MM LEADED WINDOW
18	1		36" x 80" LEADED (1/8") DOOR w/ 16" x 24" x 14.5MM LEAD WINDOW
17	1		42" x 80" ENTRY DOOR
16	1		VIEWER
15	1		GE SERVICE STORAGE
14	1		CODONICS PRINTER
13	7		OVERHEAD STORAGE CABINETS
12	2		WORK COUNTER
11	2		EQUILIZER LEVELING LEGS 26,000 LB. CAP.
10	1		AIR RIDE UPPER COUPLER (KING PIN)
9	1		AIR RIDE SUSPENSION 44,000 LB. CAP.
8	1		ROLL-UP DOOR 7'-5"
7	1		PLATFORM LIFT - 89" WIDE ALUMINUM PLATFORM
6	1		100KW DIESEL GENERATOR
5	1		48,000 BTU AIR CONDITIONER
4	1		POWER DISTRIBUTION UNIT
3	1		GEMS OPERATOR WORK STATION
2	1		GEMS PATIENT TABLE
1	1		GEMS DST H - POWER GANTRY

BILL OF MATERIALS

THIS DRAWING IS PROVIDED ON A CONFIDENTIAL BASIS SUBJECT TO RETURN ON DEMAND OF OSHKOSH SPECIALTY VEHICLES (OSHKOSH), WHICH RETAINS ALL RIGHTS ASSOCIATED WITH IT AND THE ARTICLE OR ARTICLES IT REPRESENTS. DISCLOSURE, REPRODUCTION OR ALTERATION OF ANY PART OF THIS DRAWING OR MANUFACTURE, USE OR SALE OF THE ARTICLE OR ARTICLES REPRESENTED IS PROHIBITED WITHOUT THE PRIOR WRITTEN AUTHORIZATION OF OSHKOSH. © OSHKOSH SPECIALTY VEHICLES (unpublished).

JOB# 10227-A01-36

REFERENCE DRAWING: TITLE: GE MEDICAL SYSTEMS DISCOVERY ST PET/CT

GENERAL LAYOUT: 16745 S. LATHROP AVENUE HARVEY, IL 60426 PHONE: (708) 596-5066 FAX: (708) 596-2480

OSHKOSH SPECIALTY VEHICLES

DATE: 8/30/06 **SCALE:** 1/2"=1'-0"

DRAWN BY: **CHECKED BY:**

DRAWING NUMBER: 12193-A01